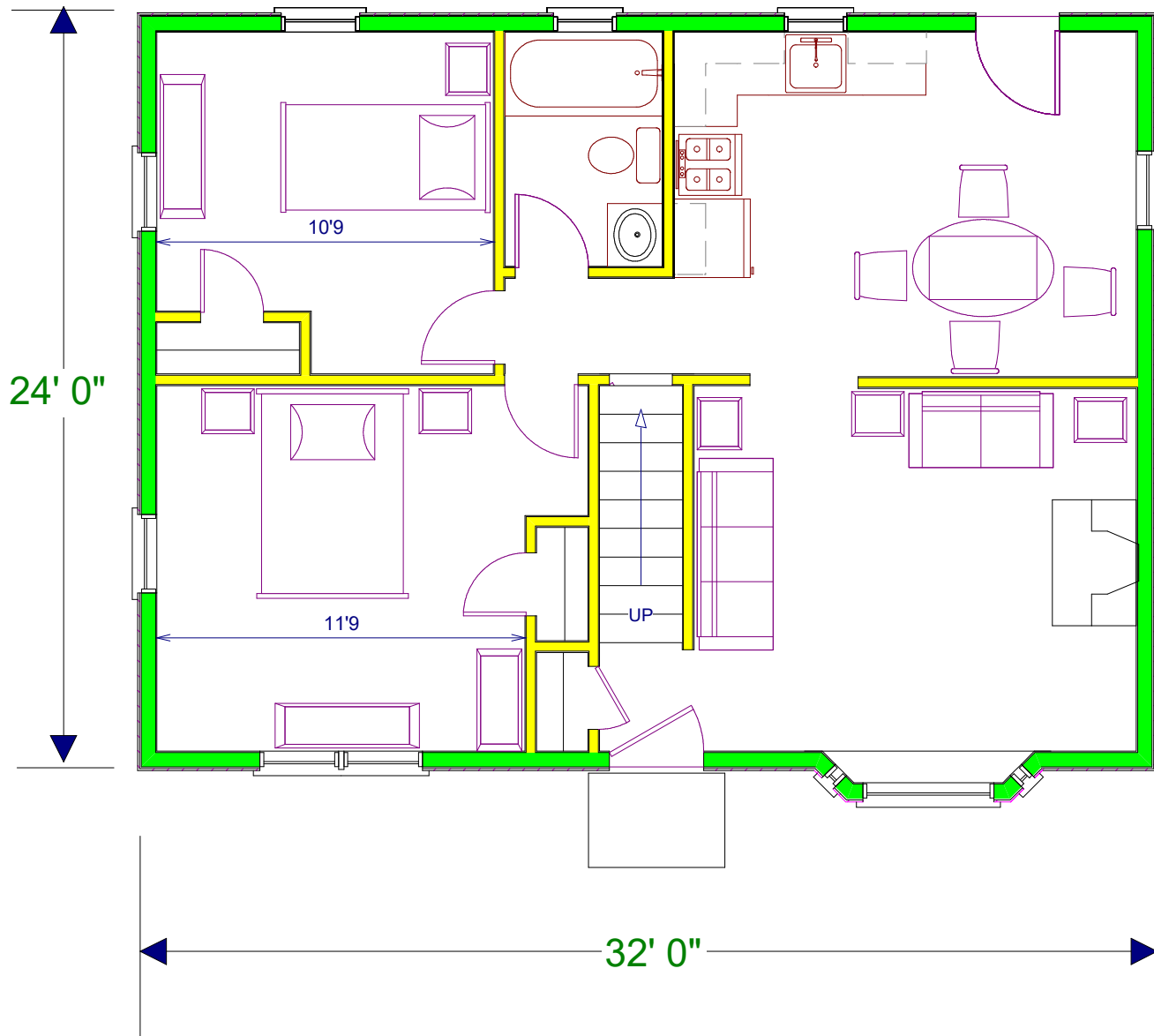


Evolution of Home Styles

Capes in the early 1920's to early / mid 40's



Size of house was adequate, based on current life style

Stairs leading to upper level was greeted with a door into an unfinished attic. Storage use only.

King & Queen size beds didn't exist until manufactured until the late 40's.

Closets small, less shoes / clothing owned. Doors swung open, no sliding or Bi-fold doors used.

Televisions were first produced and released commercially around 1938 however not incidental until the late 30's. If purchased, usually just 1 placed in the living room.

Kitchens smaller, refrigerators small & single door only, No dish washers, no need for extra counter top space, small electric appliances either not invented or common.

Family rooms, exterior decks didn't exist, basements usually unfinished.