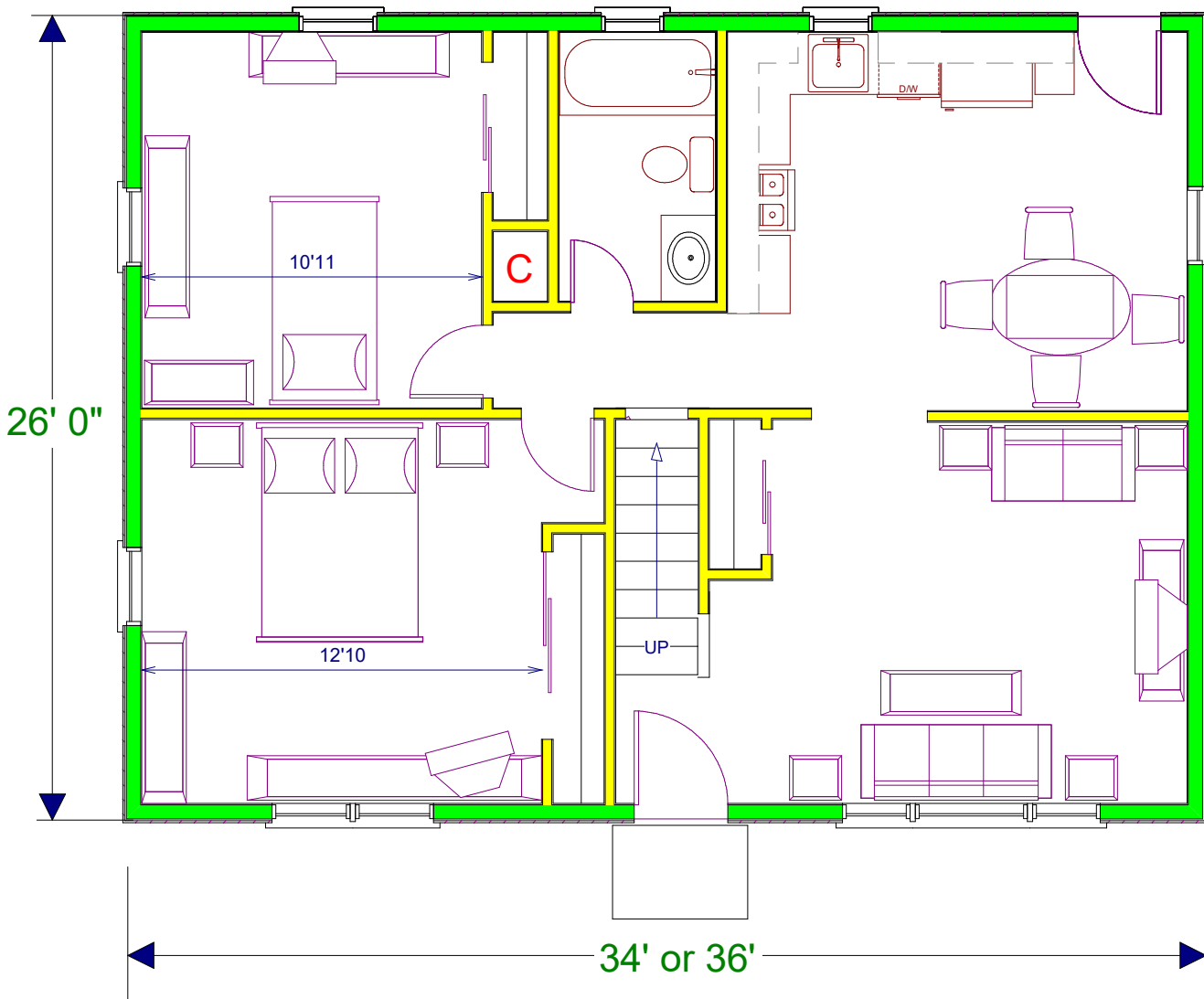


# Evolution of Home Styles

Capes in the mid / late 1940's to early / mid 70's



Size of house slightly enlarged , based on current life style.

Stairs leading to upper level to a possible finish attic (2 bedrooms),if so, 1st floor front bedroom possibly converted to a family room.

King & Queen size beds now manufactured.

Closets larger, eliminated swinging door, now sliding for full access..

Televisions more common, in living room. Each bedroom late 60's..

Kitchen larger, refrigerators wider, dish washer. extra counter top space for small electric appliances( coffee maker, blender, can opener, microwave.)

Family room, concrete patio off rear door & finished basements most likely,

Less fireplaces. Started en-larging attic space with full rear dormers mid 70's.